



APPENDIX-B
to
PROPERTY CONDITION REPORT

Shopping Center

1234 Main Street
Anyplace, USA 00000

SDAT Tax Map 0000 Parcel XXXX "Parcel X" Account XXXXX

Prepared for:

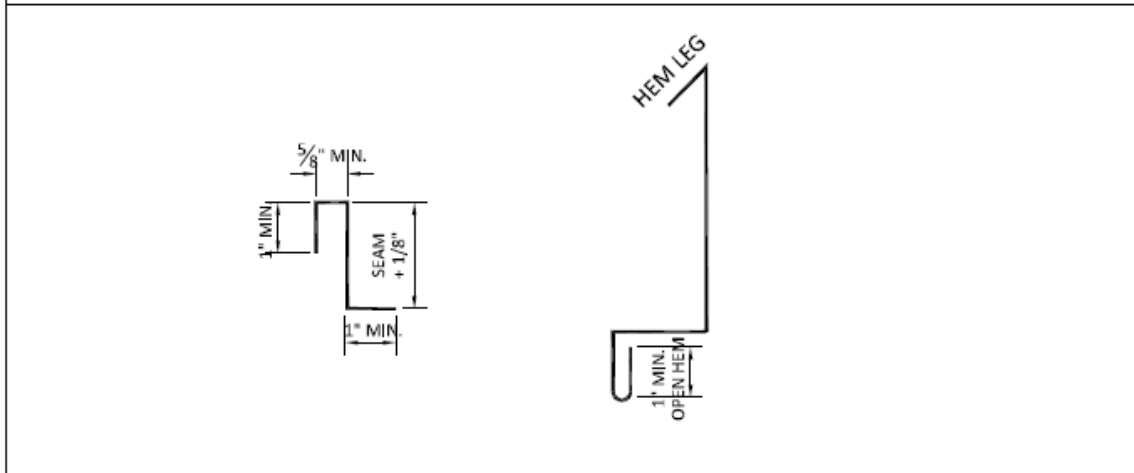
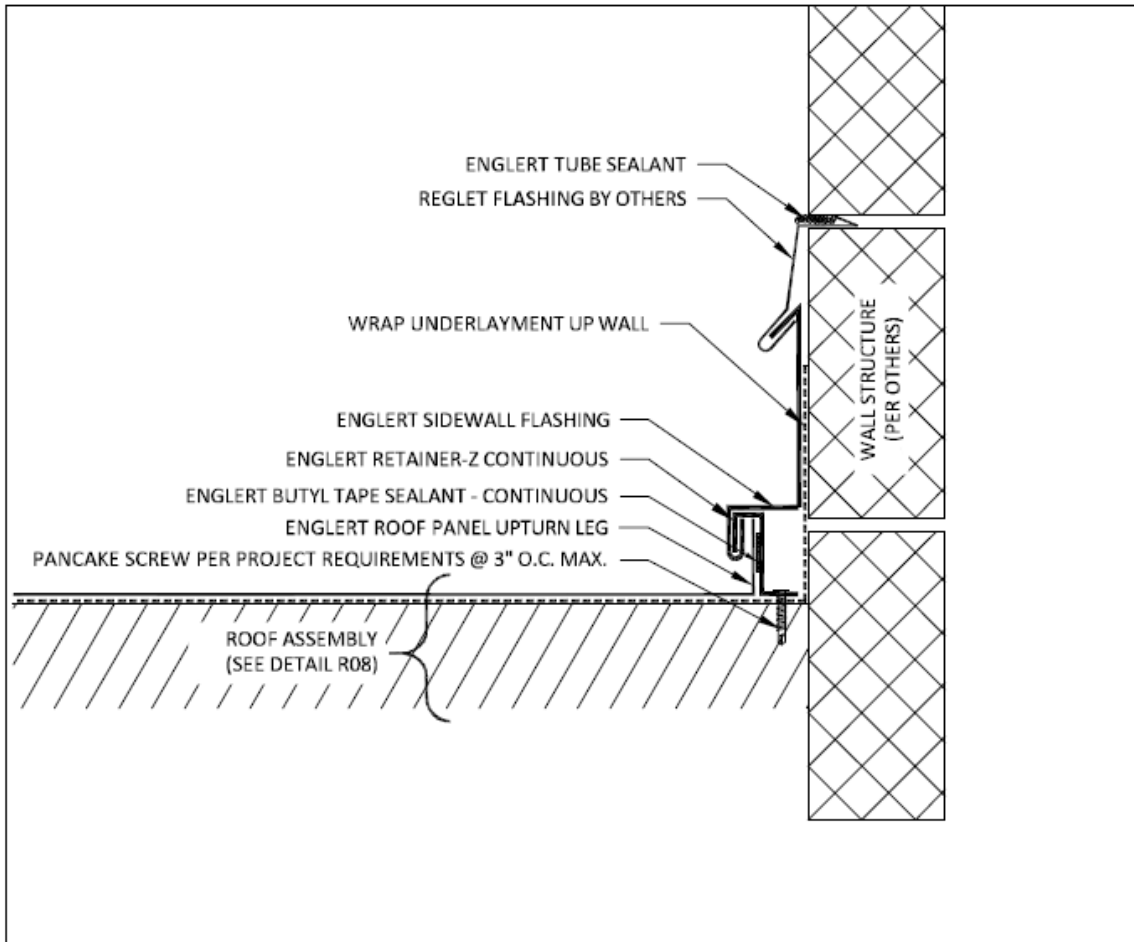
Our Client
4321 Any Street
Anyplace, USA 00000


Inspected on:

Month 03, 2015

1. Standing Seam Metal Roof

1.1. Sidewall Flashing at Masonry

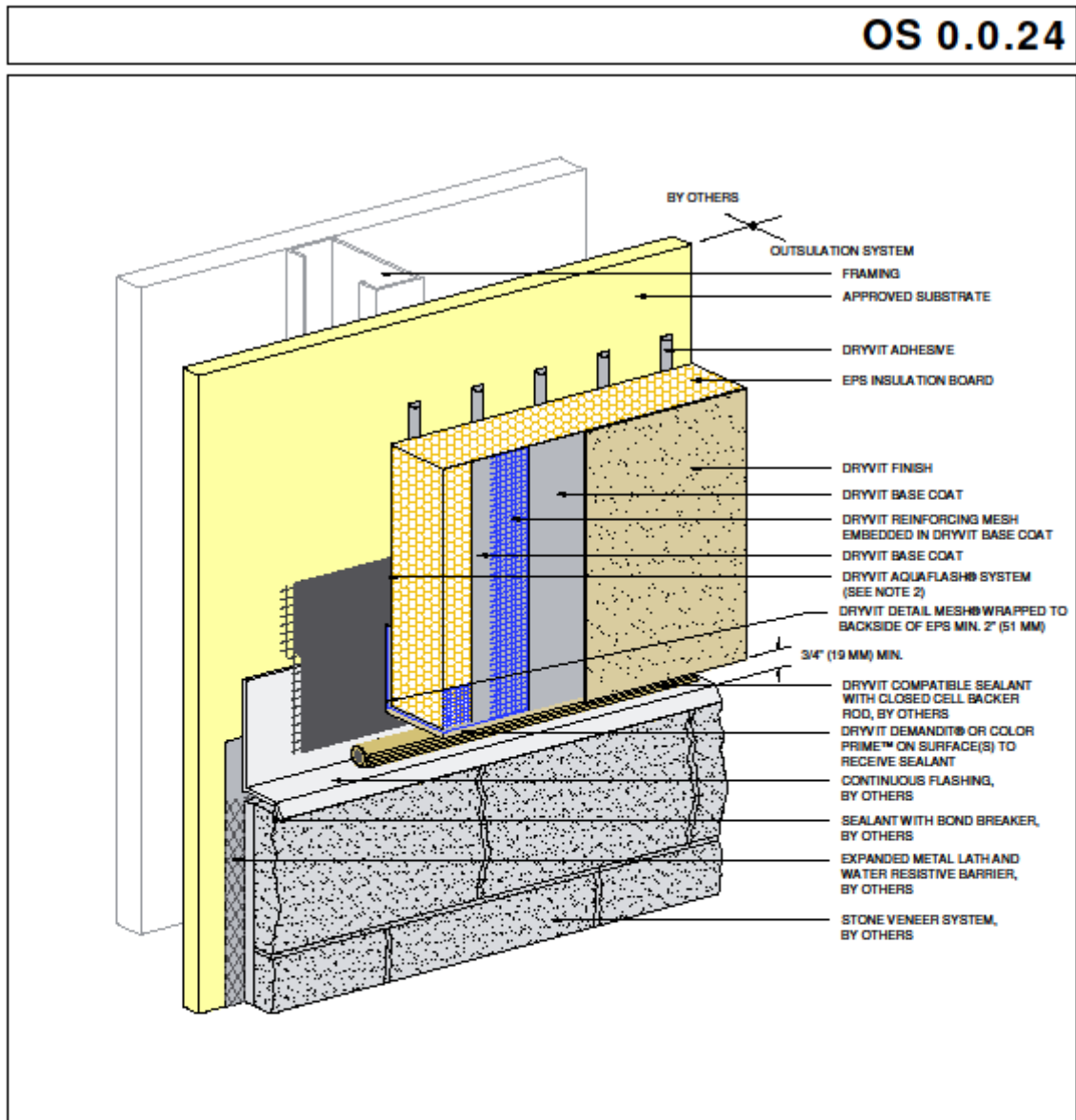


 <p>www.englertinc.com 800-364-5378</p> <p><small>GENERIC BEST PRACTICE ASSEMBLY SHOWN. WATER BUSINESS WARRANTY NOT IMPLIED. WHEN SITE CONDITIONS DIFFER, SPECIFIC ENGINEERING NECESSARY.</small></p>	<h3>ROOF SIDEWALL</h3>	<p>DETAIL SUBJECT TO CHANGE WITHOUT NOTICE.</p>
	<h3>MASONRY REGLET</h3>	<p>Detail #</p> <h2>R22.3</h2>

OCT 2012 © ENGLERT, INC.

2. EIFS - Exterior Insulation and Finish System: Dryvit Outsulation® System Details (DS107)

2.1. Termination at Brick/Stone Veneer OS 0.0.24



Outsulation® System

Horizontal Termination at Stone Veneer

NOTE:

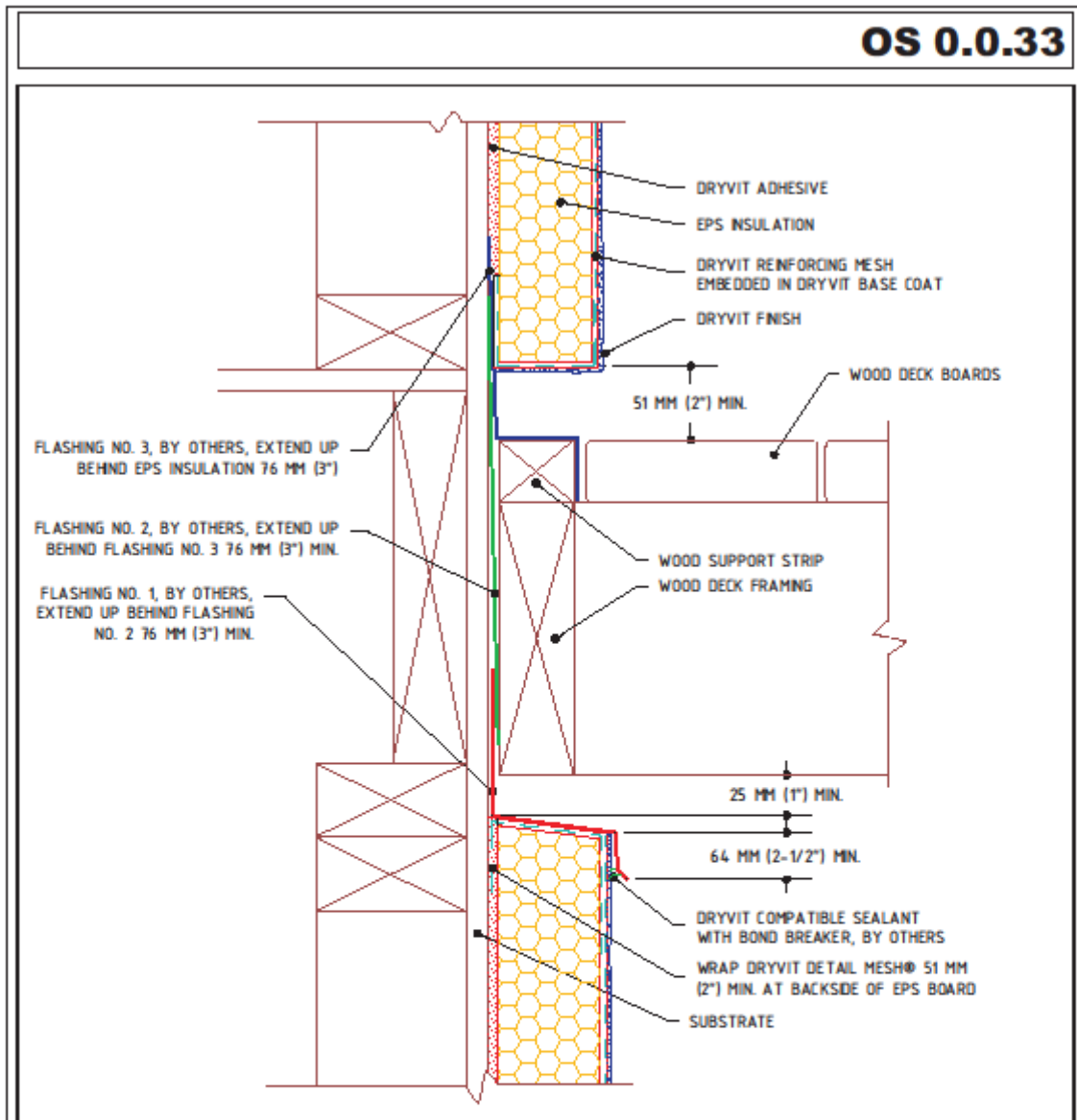
1. DRYVIT RECOMMENDS THAT GROUND FLOOR APPLICATIONS AND ALL FACADES EXPOSED TO ABNORMAL STRESS, HIGH TRAFFIC, OR DELIBERATE IMPACT HAVE THE BASE COAT REINFORCED WITH FRANZER® MESH PRIOR TO STANDARD™ OR STANDARD PLUS™ MESH. LOCATION OF HIGH IMPACT ZONES SHOULD BE INDICATED ON CONTRACT DRAWINGS.

2. DRYVIT FLASHING TAPE SURFACE CONDITIONER™ AND DRYVIT FLASHING TAPE™ MAY BE USED IN LIEU OF DRYVIT AQUAFASH SYSTEM.

3. FOR INSTALLATION OF DRYVIT AIR/WATER-RESISTIVE BARRIER COATING BENEATH CLADDINGS OTHER THAN DRYVIT EIFS, REFER TO DRYVIT PUBLICATION DS840.

The architecture, engineering, and design of the project using the Dryvit products is the responsibility of the project's design professional. All systems must comply with local building codes and standards. This detail is for general information and guidance only and Dryvit specifically disclaims any liability for the use of this detail and for the architecture, design, engineering or workmanship of any project. The project design professional determines, in its sole discretion, whether this detail or a functionally equivalent detail is best suited for the project. Use of a functionally equivalent detail does not violate Dryvit's warranty. This detail is subject to change without notice. Contact Dryvit to ensure you have the most recent version.

2.2. Termination at Deck OS 0.0.33



OS 0.0.33

Outsulation® System

Termination at Deck - Section

NOTE:

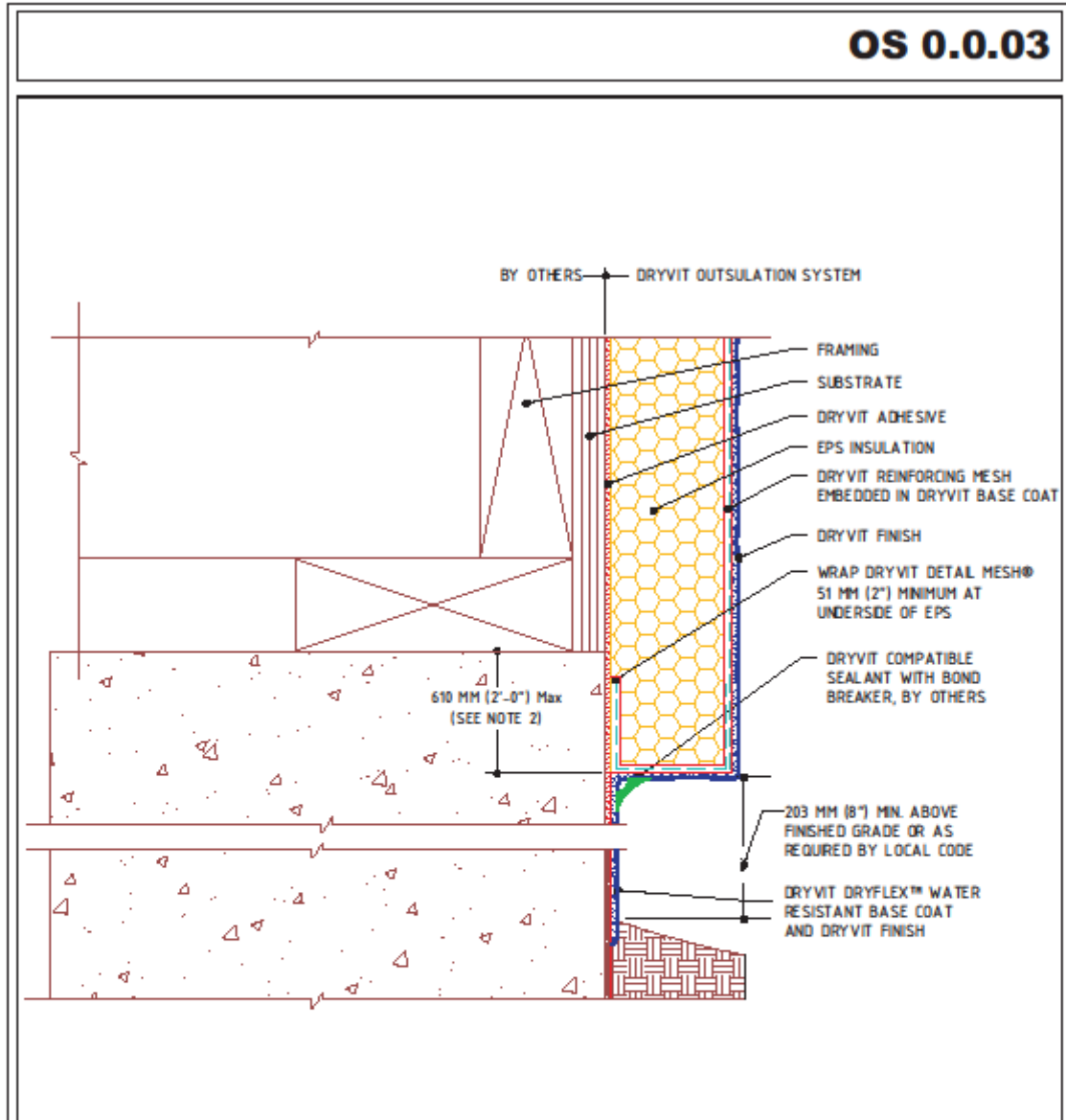
1. THESE DETAILS DO NOT APPLY TO CANTILEVERED DECKS. CANTILEVERED DECKS REQUIRE JOB SPECIFIC FLASHING DETAILS.
2. WHEN FLASHING NUMBER 1 IS IN PLACE, EPS WILL NEED TO BE PRE WRAPPED WITH BASE COAT AND MESH.
3. REFER TO OS 0.0.34 FOR DECK CUTAWAY DETAIL.

The architecture, engineering and design of the project using the Dryvit products is the responsibility of the project's design professional. All systems must comply with local building codes and standards. This detail is for general information and guidance only and Dryvit specifically disclaims any liability for the use of this detail and for the architecture, design, engineering or workmanship of any project. The project design professional determines, in his sole discretion, whether this detail or a functionally equivalent alternative is best suited for the project. Use of a functionally equivalent detail does not violate Dryvit's warranty. This detail is subject to change without notice. Contact Dryvit to insure you have the most recent version.

APPROVED BY:	REV:	DATE:
DAW	6	05/06



2.3. Foundation - Termination Above Grade OS 0.0.03



Outsulation® System

Foundation - Termination Above Grade

NOTE:

1. DRYVIT RECOMMENDS THAT GROUND FLOOR APPLICATIONS AND ALL FACADES EXPOSED TO ABNORMAL STRESS, HIGH TRAFFIC, OR DELIBERATE IMPACT HAVE THE BASE COAT REINFORCED WITH PANZER® MESH PRIOR TO STANDARD MESH™ OR STANDARD PLUS MESH™. LOCATION OF HIGH IMPACT ZONES SHOULD BE INDICATED ON CONTRACT DRAWINGS.

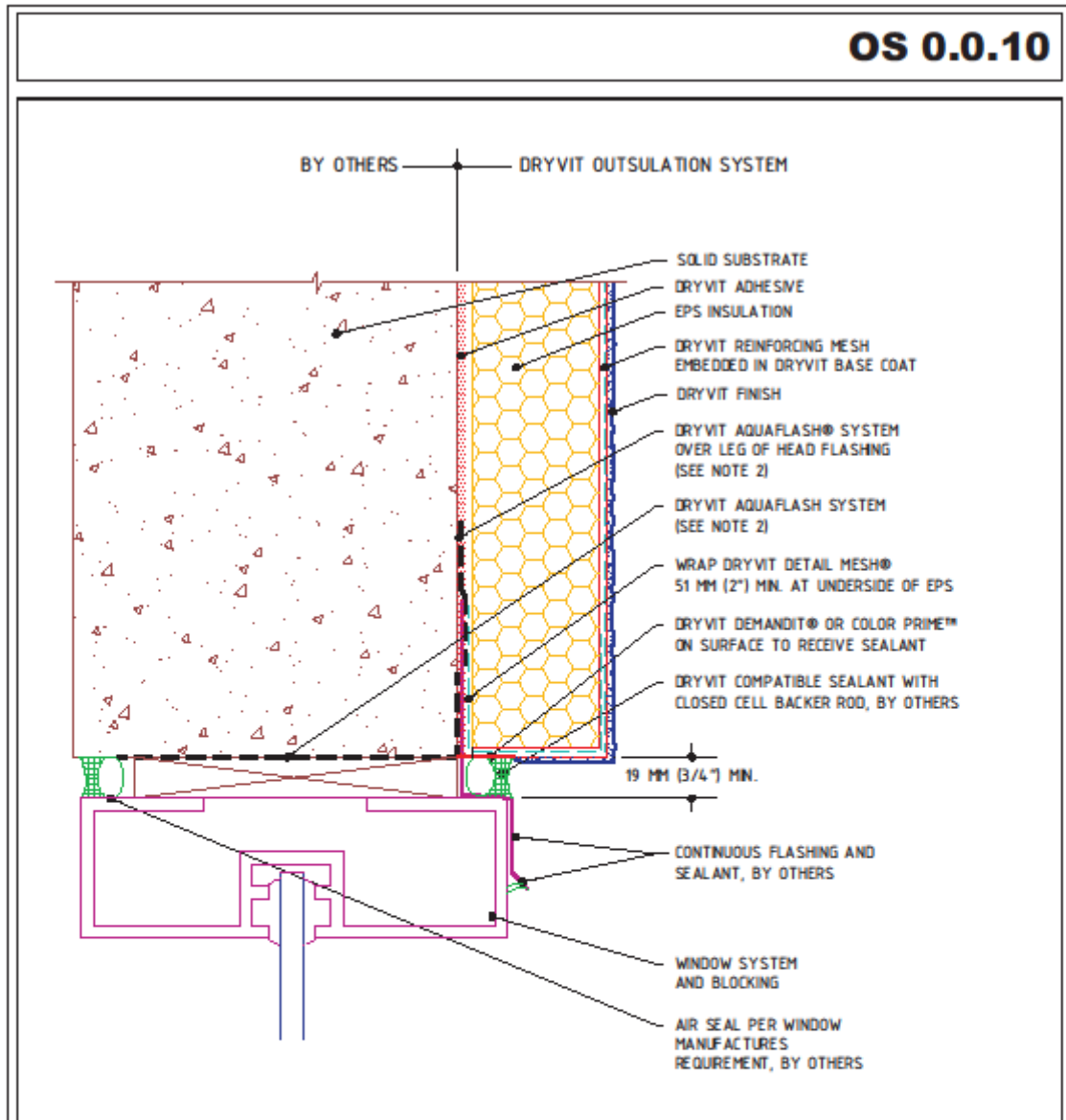
- 2. EXPANSION JOINT IS REQUIRED ALONG TOP OF FOUNDATION IF 610 MM (2'-0") DIMENSION IS EXCEEDED.
- 3. SLOPE GRADE AWAY FROM WALL.
- 4. STOP FINISH APPROXIMATELY 51 MM (2") BELOW GRADE.

The architecture, engineering and design of the project using the Dryvit products is the responsibility of the project's design professional. All systems must comply with local building codes and standards. This detail is for general information and guidance only and Dryvit specifically disclaims any liability for the use of this detail and for the architecture, design, engineering or workmanship of any project. The project design professional determines, in his sole discretion, whether this detail or a functionally equivalent alternative is best suited for the project. Use of a functionally equivalent detail does not violate Dryvit's warranty. This detail is subject to change without notice. Contact Dryvit to insure you have the most recent version.

APPROVED BY:	REV.	DATE:
DAW	11	08/08



2.4. Termination at Head OS 0.0.10



OS 0.0.10

Outsulation® System

Termination at Head-Solid Substrate

NOTE:

1. DRYVIT RECOMMENDS THAT GROUND FLOOR APPLICATIONS AND ALL FACADES EXPOSED TO ABNORMAL STRESS, HIGH TRAFFIC, OR DELIBERATE IMPACT HAVE THE BASE COAT REINFORCED WITH PANZER® MESH PRIOR TO STANDARD MESH™ OR STANDARD PLUS MESH™. LOCATION OF HIGH IMPACT ZONES SHOULD BE INDICATED ON CONTRACT DRAWINGS.

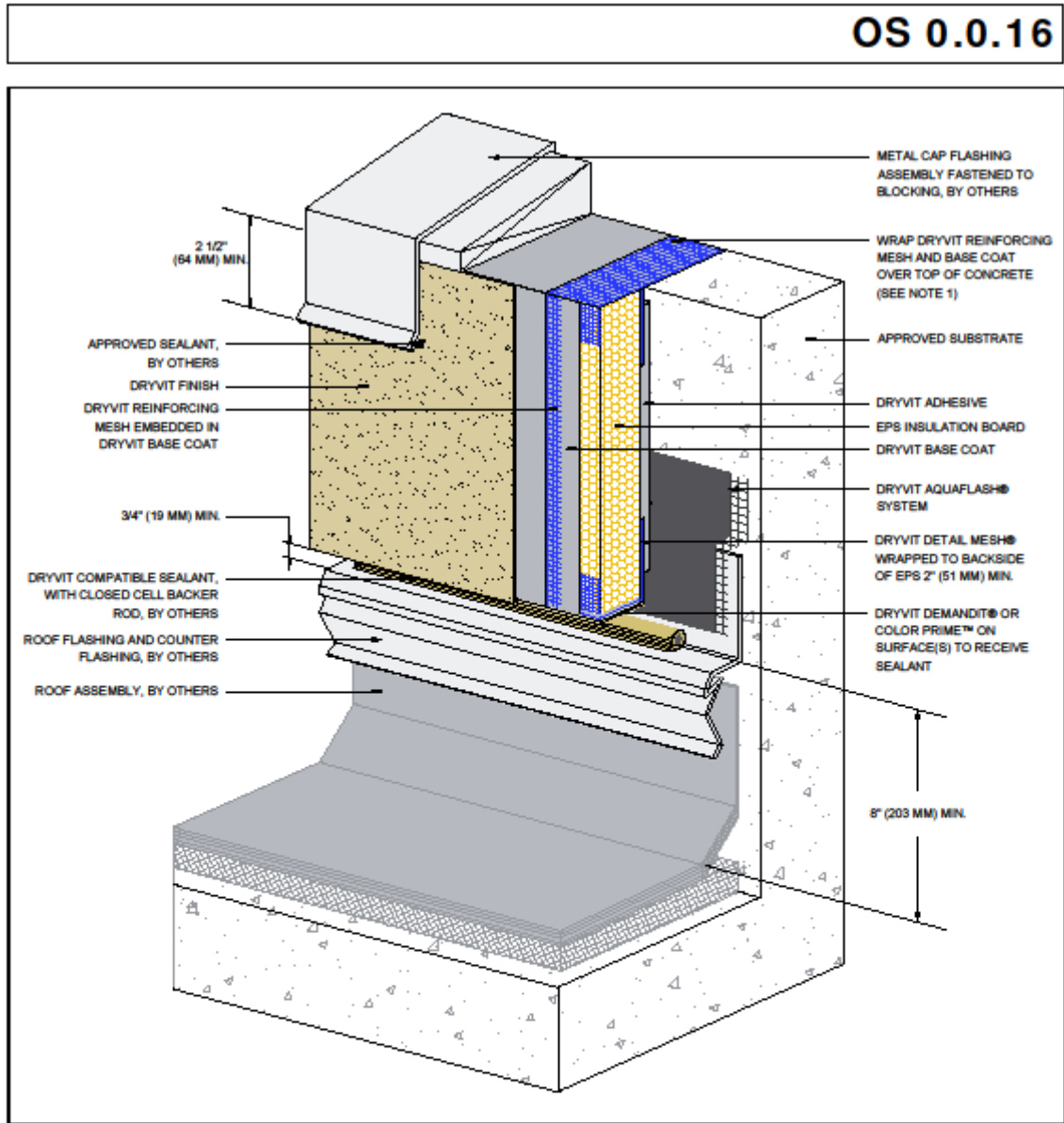
2. DRYVIT FLASHING TAPE SURFACE CONDITIONER™ AND DRYVIT FLASHING TAPE™ MAY BE USED IN LIEU OF AQUAFLASH SYSTEM.

The architecture, engineering and design of the project using the Dryvit products is the responsibility of the project's design professional. All systems must comply with local building codes and standards. This detail is for general information and guidance only and Dryvit specifically disclaims any liability for the use of this detail for the architecture, design, engineering or workmanship of any project. The project design professional determines, in its sole discretion, whether this detail or a functionally equivalent alternative is best suited for the project. Use of a functionally equivalent detail does not violate Dryvit's warranty. This detail is subject to change without notice. Contact Dryvit to insure you have the most recent version.

APPROVED BY:	REV:	DATE:
DAW	02	08/06



2.5. Parapet/Wall Termination OS 0.0.16



Outsulation® System

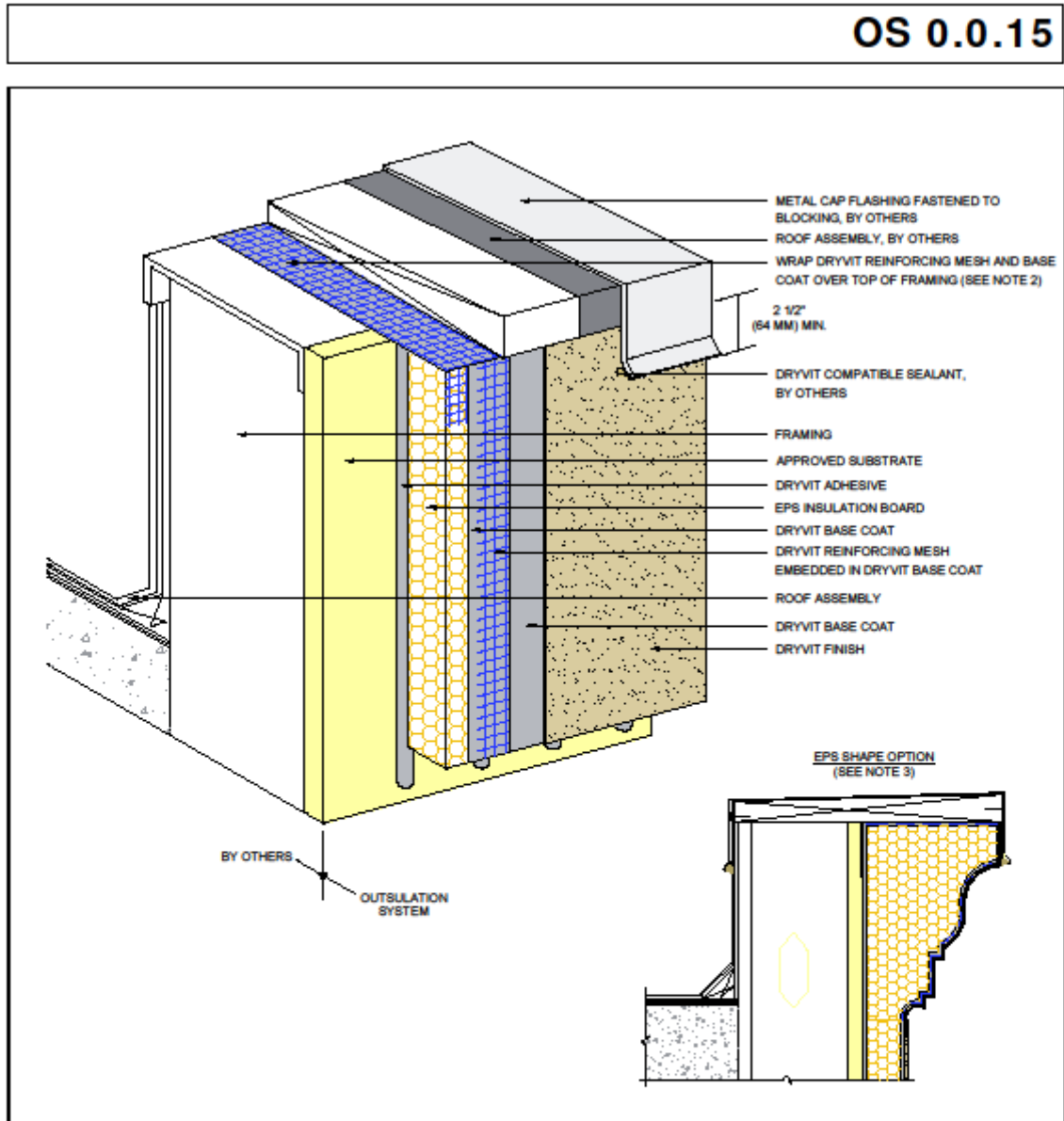
Termination At Parapet - Solid Substrate

NOTE:
 1. DRYVIT RECOMMENDS THAT GROUND FLOOR APPLICATIONS AND ALL FACADES EXPOSED TO ABNORMAL STRESS, HIGH TRAFFIC, OR DELIBERATE IMPACT HAVE THE BASE COAT REINFORCED WITH PANZER® MESH PRIOR TO STANDARD™ OR STANDARD PLUS™ MESH. LOCATION OF HIGH IMPACT ZONES SHOULD BE INDICATED ON CONTRACT DRAWINGS.
 2. AS AN OPTION, DRYVIT AQUAFASH® SYSTEM OR DRYVIT FLASHING TAPE SURFACE CONDITIONER™ AND DRYVIT FLASHING TAPE™ MAY BE USED TO PROVIDE ADDITIONAL PROTECTION AT THE TOP OF A PARAPET WALL.

The architecture, engineering, and design of the project using the Dryvit products is the responsibility of the project's design professional. All systems must comply with local building codes and standards. This detail is for general information and guidance only and Dryvit specifically disclaims any liability for the use of this detail and for the architecture, design, engineering or workmanship of any project. The project design professional determines, in its sole discretion, whether this detail or a functionally equivalent detail is best suited for the project. Use of a functionally equivalent detail does not violate Dryvit's warranty. This detail is subject to change without notice. Contact Dryvit to ensure you have the most recent version.



2.6. Termination at Parapet – Cap Flashing OS 0.0.15



Outsulation® System

Termination At Parapet - Cap Flashing

NOTE:

1. DRYVIT RECOMMENDS THAT GROUND FLOOR APPLICATIONS AND ALL FACADES EXPOSED TO ABNORMAL STRESS, HIGH TRAFFIC, OR DELIBERATE IMPACT HAVE THE BASE COAT REINFORCED WITH PANZER® MESH PRIOR TO STANDARD™ OR STANDARD PLUS™ MESH. LOCATION OF HIGH IMPACT ZONES SHOULD BE INDICATED ON CONTRACT DRAWINGS.

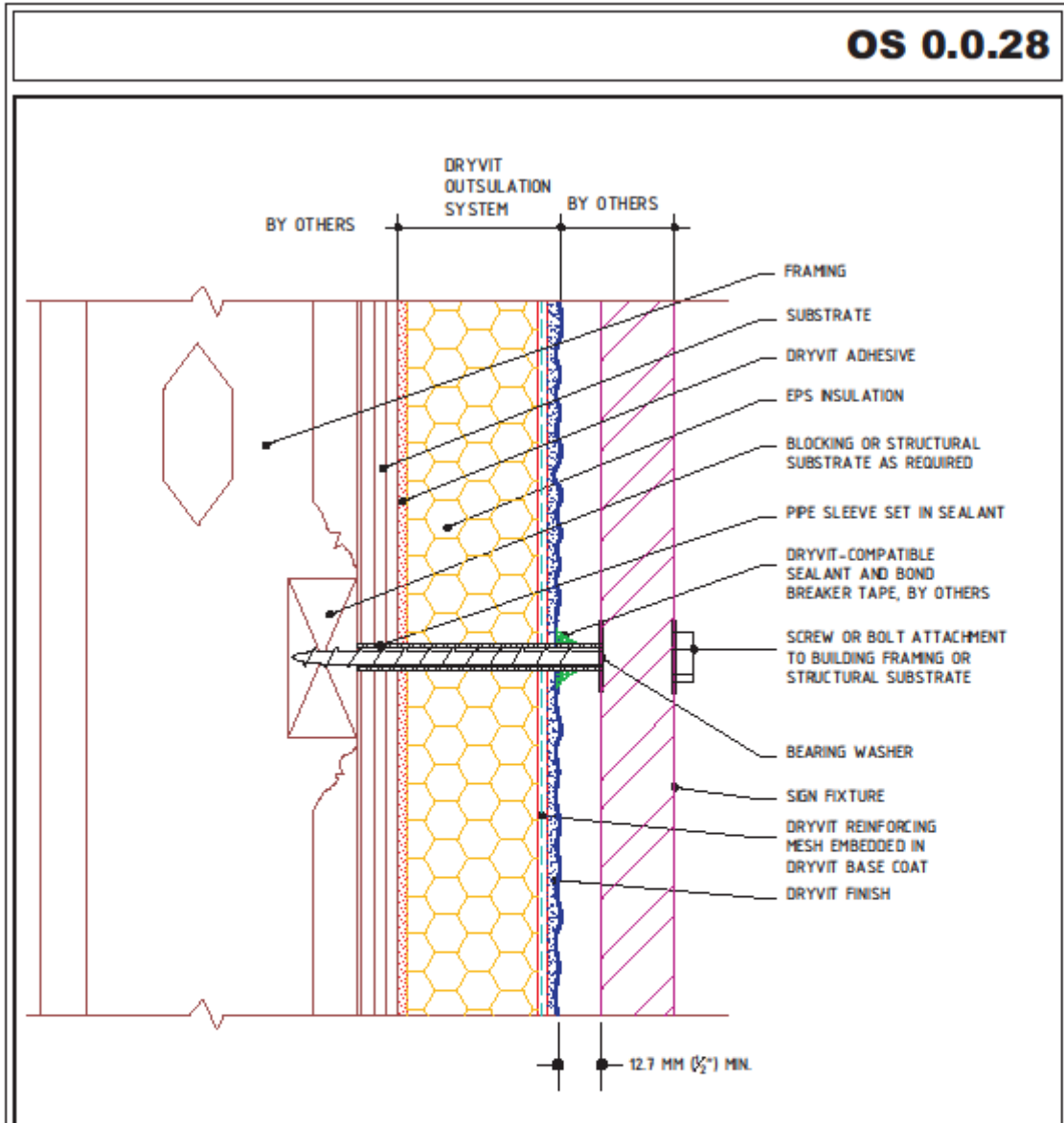
2. AS AN OPTION, DRYVIT AQUAFASH SYSTEM OR DRYVIT FLASHING TAPE SURFACE CONDITIONER AND DRYVIT FLASHING TAPE MAY BE USED TO PROVIDE ADDITIONAL PROTECTION AT TOP OF A PARAPET WALL.

3. MAXIMUM THICKNESS OF EPS BUILT OUT SHAPES SHALL NOT EXCEED 13" (330 MM) AT ANY POINT MEASURED FROM THE SUBSTRATE.

The architecture, engineering, and design of the project using the Dryvit products is the responsibility of the project's design professional. All systems must comply with local building codes and standards. This detail is for general information and guidance only and Dryvit specifically disclaims any liability for the use of this detail and for the architecture, design, engineering or workmanship of any project. The project design professional determines, in its sole discretion, whether this detail or a functionally equivalent detail is best suited for the project. Use of a functionally equivalent detail does not violate Dryvit's warranty. This detail is subject to change without notice. Contact Dryvit to ensure you have the most recent version.



2.7. Sign Attachment OS 0.0.28



Outsulation® System

Sign Attachment

NOTE:
1. PERMETER OF PIPE SLEEVE IS CAULKED TO PREVENT WATER ENTRY INTO WALL.

The architecture, engineering and design of the project using the Dryvit products is the responsibility of the project's design professional. All systems must comply with local building codes and standards. This detail is for general information and guidance only and Dryvit specifically disclaims any liability for the use of this detail and for the architecture, design, engineering or workmanship of any project. The project design professional determines, in his sole discretion, whether this detail or a functionally equivalent alternative is best suited for the project. Use of a functionally equivalent detail does not violate Dryvit's warranty. This detail is subject to change without notice. Contact Dryvit to insure you have the most recent version.

APPROVED BY:	REV:	DATE:
DM	02	05/08

